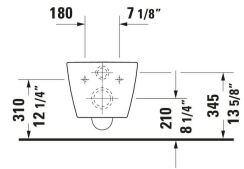
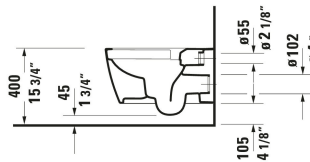
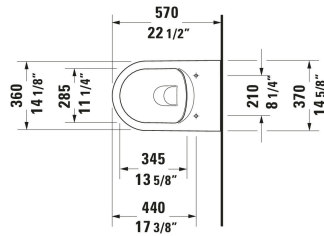


**ME by Starck Wall Mounted Toilet # 252909..92 / 252909..92 / 252909..92 / 252909..92**

| < 14 1/8 " > |



Wall Mounted Toilet	Dimension	Weight	Order number
Flush water quantity: 1.2/0.8 gal, Washdown model, Flushing rim: Rimless, Flush system: washdown model, Outlet horizontal, Concealed fixation, ADA: Yes, cUPC listed: Yes			
<b>Colors</b>			
00 White 20 HygieneGlaze (an antibacterial ceramic glaze that provides almost indefinite effectiveness) 26 White/White Satin Matte 90 White HygieneGlaze/White Satin Matte			
<b>Variant</b>			
White High Gloss, Flush water quantity: 1.28/0.8 gal, WaterSense: Yes	14 1/8 "x14 "	57.320 lb	252909..92
White High Gloss, HygieneGlaze, Flush water quantity: 1.28/0.8 gal, WaterSense: Yes	14 1/8 "x14 "	57.320 lb	252909..92
Interior color White High Gloss, Exterior color White Satin Matte, Flush water quantity: 1.28/0.8 gal, WaterSense: Yes	14 1/8 "x14 "	57.320 lb	252909..92
Interior color White High Gloss, Exterior color White Satin Matte, HygieneGlaze, Flush water quantity: 1.28/0.8 gal, WaterSense: Yes	14 1/8 "x14 "	57.320 lb	252909..92
<b>Accessory for ceramics</b>			
Mounting Bracket Suitable for Bidet, Wall Mounted Toilet	Ø 1/2 "	0.11 lb	006500
<b>Spare parts</b>			
Noise reduction gasket	16 1/2 x 15 3/8 "	0.441 lb	005090
<b>Suitable products</b>			
Toilet Seat Slow close: No, Hinge material: Stainless Steel, 14 3/4 x 18 "	14 3/4 x 18 "		002001
Toilet Seat Slow close: Yes, Removable Seat, Hinge material: Stainless Steel, 14 3/4 x 18 "	14 3/4 x 18 "		002009
Actuator Plate A1 Plastic, Dual Flush, Trip lever type: Mechanical, Flush operation technology: Manual, Installation Type: surface mounted, Includes mounting frame, including mounting kit, Includes push rod, 8 1/2 x 3/8 "	8 1/2 x 3/8 "		WD5008

**ME by Starck Wall Mounted Toilet # 252909..92 / 252909..92 /  
252909..92 / 252909..92**

|< 14 1/8 " >|

In-Wall Tank & Carrier Standard Includes HDPE toilet wall-mounted outlet bend DN 90/90, Powder-coated, Installation Type: In lightweight stand construction, Installation Type: Drywall, Max. projection toilet: 24 5/8 ", Adjustable height: 9 1/2 ", Trip lever type: Mechanical, Trip lever placement: Front, Adjustable flush volumes, Flush type: Dual Flush, Insulated tank, Self-supporting, Suitable for panelling with plasterboards, 23 1/4 x 3 1/2 "

WD1022

*All drawings contain the necessary measurements which are subject to standard tolerances. They are stated in inch & mm and are non-binding. Exact measurements, in particular for customized installation scenarios, can only be taken from the finished ceramic piece.*