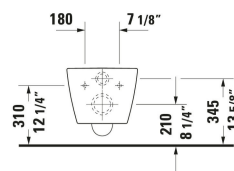
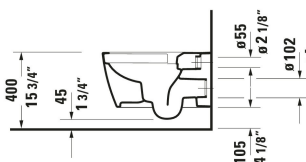
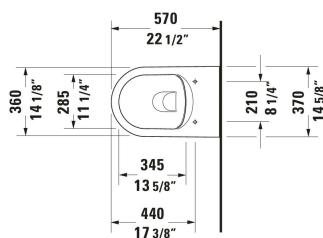


ME by Starck Wall Mounted Toilet # 252909..92 / 252909..92 / 252909..92

| < 14 1/8 " > |



Wall Mounted Toilet	Dimension	Weight	Order number
Flush water quantity: 1.2/0.8 gal, Washdown model, Flushing rim: Rimless, Flush system: washdown model, Outlet horizontal, Concealed fixation, ADA: Yes, cUPC listed: Yes			
Colors			
00 White 20 HygieneGlaze (an antibacterial ceramic glaze that provides almost indefinite effectiveness) AC White Satin Matt HygieneGlaze Plus (an antibacterial ceramic glaze that provides almost indefinite effectiveness)			
Variant			
White High Gloss, Flush water quantity: 1.28/0.8 gal, WaterSense: Yes	14 1/8 "x14 "	57.320 lb	252909..92
White High Gloss, HygieneGlaze, Flush water quantity: 1.28/0.8 gal, WaterSense: Yes	14 1/8 "x14 "	57.320 lb	252909..92
White Satin Matte, HygieneGlaze Plus, Coating	14 1/8 "x14 "	57.320 lb	252909..92
Accessory for ceramics			
Mounting Bracket Suitable for Bidet, Wall Mounted Toilet	Ø 1/2 "	0.617 lb	006500
Spare parts			
Noise reduction gasket	16 1/2 x 15 3/8 "	0.441 lb	005090
Suitable products			
Toilet Seat Slow close: No, Hinge material: Stainless Steel, 14 3/4 x 18 "	14 3/4 x 18 "		002001
Toilet Seat Slow close: Yes, Removable Seat, Hinge material: Stainless Steel, 14 3/4 x 18 "	14 3/4 x 18 "		002009
Actuator Plate A1 Plastic, Dual Flush, Trip lever type: Mechanical, Flush operation technology: Manual, Installation Type: surface mounted, Includes mounting frame, including mounting kit, Includes push rod, 8 1/2 x 3/8 "	8 1/2 x 3/8 "		WD5008

ME by Starck Wall Mounted Toilet # 252909..92 / 252909..92 / 252909..92

|< 14 1/8 " >|

In-Wall Tank & Carrier Standard Includes HDPE toilet wall-mounted outlet bend DN 90/90, Powder-coated, Installation Type: In lightweight stand construction, Installation Type: Drywall, Max. projection toilet: 24 5/8 ", Adjustable height: 9 1/2 ", Trip lever type: Mechanical, Trip lever placement: Front, Adjustable flush volumes, Flush type: Dual Flush, Insulated tank, Self-supporting, Suitable for panelling with plasterboards, 23 1/4 x 3 1/2 "

WD1022

All drawings contain the necessary measurements which are subject to standard tolerances. They are stated in inch & mm and are non-binding. Exact measurements, in particular for customized installation scenarios, can only be taken from the finished ceramic piece.