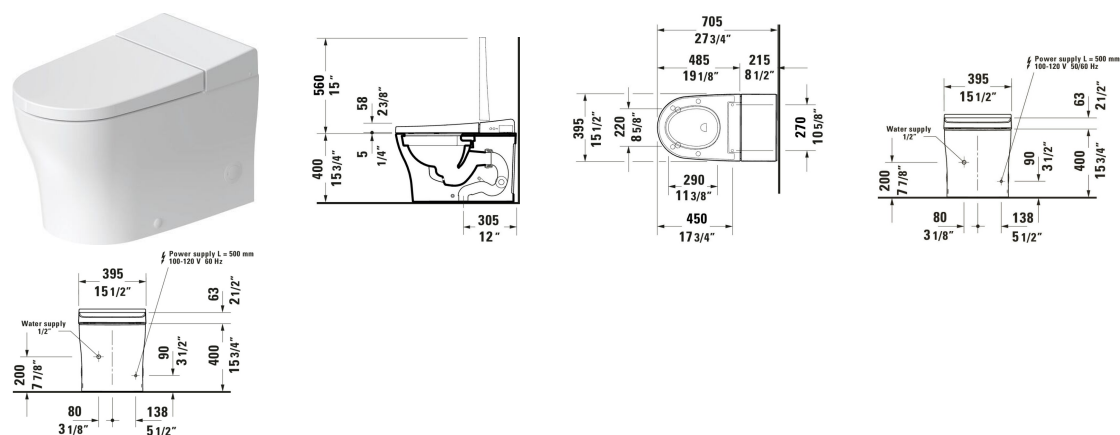


# SensoWash® u Bidet Toilet # 622000011001300

| < 27 3/4 " > |



Bidet Toilet	Dimension	Weight	Order number
Floorstanding, Flushing rim: Rimless, Siphonic, Outlet vertical, White, Seat material type: Thermoplastic, Lid material type: Thermoplastic, Rearwash, Frontwash, Pulsing shower spray: Oscillating, Water position adjustment: Continuously adjustable, Number of spray intensity options: Continuously adjustable, Warm air dryer, Heated seat, Number of user profiles: 2, Odor extraction, Decalcification function, Number of user profiles: 2, Odor extraction, Self-cleaning function, Decalcification function, Energy saving mode: Adjustable, Holiday mode, Min. frequency: 50 Hz, Night light			
Colors			
00 White			
Variant			
Electricity connections Concealed, Water position adjustment: 5 Steps, Number of spray intensity options: 3 Steps, Remote control, App, Operation type: Remote control, App, Connection voltage: 100 - 120 V	27 3/4 "x18 7/8 "	136.686 lb	622000011001300

All drawings contain the necessary measurements which are subject to standard tolerances. They are stated in inch & mm and are non-binding. Exact measurements, in particular for customized installation scenarios, can only be taken from the finished ceramic piece.