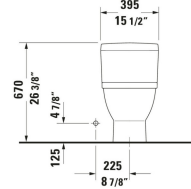
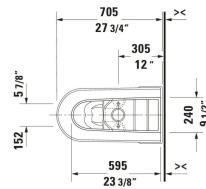
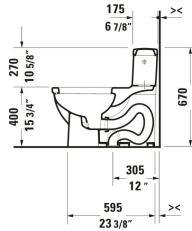
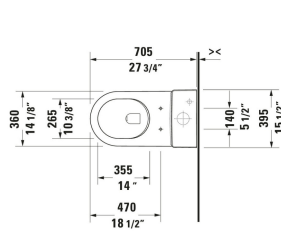


Starck 3 One Piece Toilet # D19098.. / D19098..

| < 15 1/2 " > |



One Piece Toilet	Dimension	Weight	Order number
Set items: One Piece Toilet, Toilet Seat: Article No.: 2120010001, 0063390000, One Piece Toilet: White, elongated, Siphonic, Flushing rim: Closed, Outlet vertical, Single Flush, Trip lever placement: Right, Flush water quantity: 1.28 gal			
Colors			
00 White 20 HygieneGlaze (an antibacterial ceramic glaze that provides almost indefinite effectiveness)			
Variant			
Set items: Toilet Seat, One Piece Toilet: Article No.: 0063390000, 2120010001, WaterSense: Yes, cUPC listed: Yes, cC/IAPMO®: No	15 1/2 "x26 3/8 "	119.711 lb	D19098..
Set items: Toilet Seat, One Piece Toilet: Article No.: 0063390000, 2120012001, Trip lever placement: LeftRight, HygieneGlaze, WaterSense: Yes, cUPC listed: Yes, cC/IAPMO®: No	15 1/2 "x26 3/8 "	119.711 lb	D19098..
Suitable products			
One Piece Toilet 27 3/4 ", elongated, Single Flush, Flush water quantity: 1.28 gal, Siphonic, Flushing rim: Closed, Outlet: vertical, Trip lever placement: LeftRight, Rough-in: 12 ", cUPC listed: Yes, 15 1/2 x 27 3/4 "	15 1/2 x 27 3/4 "		212001
Toilet Seat Slow close: Yes, Removable Seat, Hinge material: Stainless Steel, elongated, 14 5/8 x 19 1/4 "	14 5/8 x 19 1/4 "		006339

All drawings contain the necessary measurements which are subject to standard tolerances. They are stated in inch & mm and are non-binding. Exact measurements, in particular for customized installation scenarios, can only be taken from the finished ceramic piece.