



**Whist®**  
19" oval wall-mount/undermount bathroom sink, no  
overflow  
**K-2741-G2**

### Features

- Bowl-shaped basin in Dew with concentric ring styling
- No faucet holes; requires wall- or counter-mount faucet
- Glass material provides a strong durable surface that is easy to clean yet visually distinctive
- Fits in or within a standard size countertop and works with a variety of faucet styles
- The Whist sink is available in clear glass (Ice), translucent colors, and opaque colors

### Material

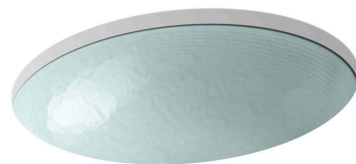
- Glass

### Installation

- Undermount

### Recommended Products/Accessories

K-7107 Decorative Drain  
K-7108 Decorative Drain  
K-7129 Drain  
K-9018 P-Trap  
K-23726 Drain treatment



ADA

CSA B651

OBC

### Codes/Standards

CSA B45.11/IAPMO Z401  
ADA  
ICC/ANSI A117.1  
CSA B651  
OBC

### KOHLER® One-Year Limited Warranty

See website for detailed warranty information.

### Available Colors/Finishes

*Color tiles intended for reference only.*

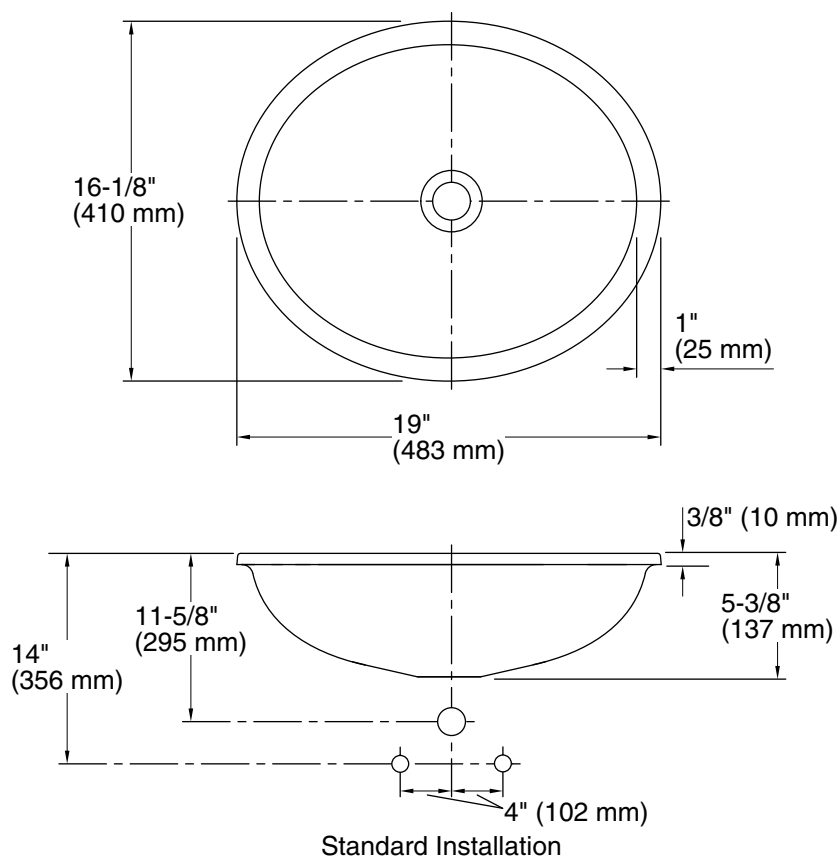
#### Color Code Description



B11 Ice



**Whist®**  
19" oval wall-mount/undermount bathroom sink, no  
overflow  
**K-2741-G2**



### Technical Information

All product dimensions are nominal.

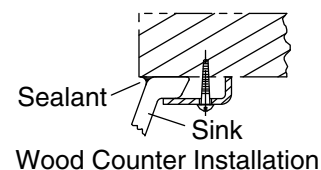
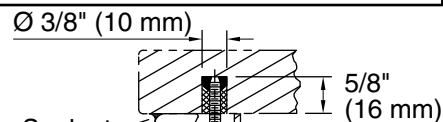
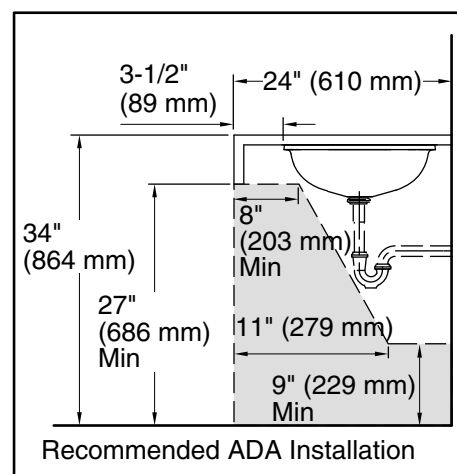
Basin configuration: Single Bowl

Bowl area: Length: 17-3/16" (437 mm)  
Width: 14-3/16" (360 mm)  
Bowl depth: 4-3/4" (121 mm)  
Water depth: 4-3/4" (121 mm)

With overflow: No

Drain hole: 1-3/4" (44 mm)

Template: 1151011-7, required, included



### Notes

Install this product according to the installation instructions.

Product does not have an overflow.

NOTICE: Countertop manufacturer or cutter must use the cut-out template provided with the product, or a current one provided by Kohler Co. (call 1-800-4-KOHLER). Kohler Co. is not responsible for cutout errors when the incorrect cut-out template is used.

ADA, OBC, CSA B651 compliant when installed to the specific requirements of these regulations.