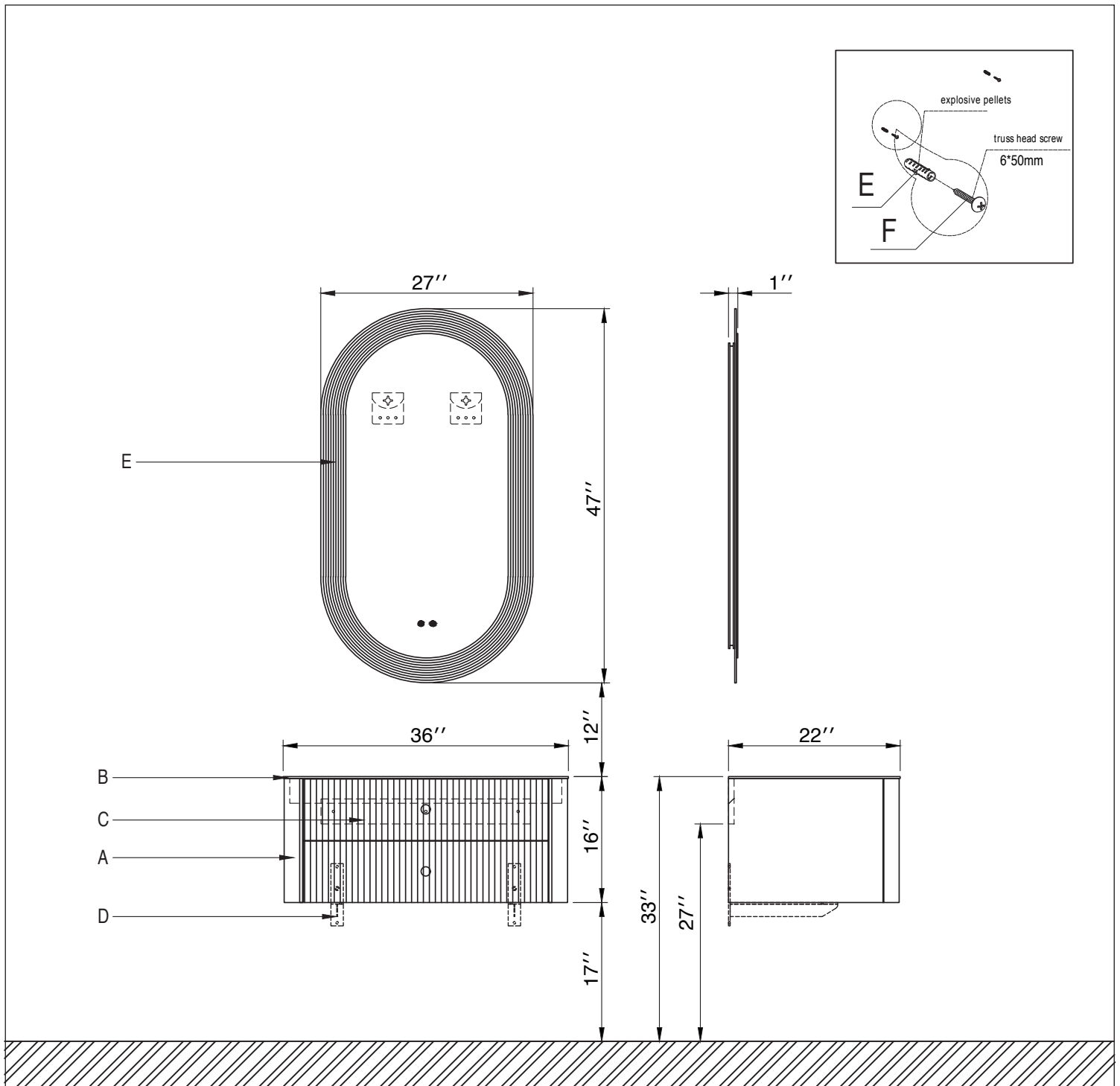


TG-53



Unpack the bathroom cabinet, countertop, bathtub, and bathroom mirror, check if all the components are complete and undamaged, then place them on a flat, clean, and soft mat to start the installation.

Bathroom Cabinet Installation

1. Determine the installation location for the product.
2. Place the stone countertop on the cabinet, adjusting the cabinet to ensure it is level and stable, aligning the sink and the countertop openings; then place the undermount sink underneath the countertop.
3. Remove the countertop to install the faucet, apply a bead of glass adhesive around the edge of the sink, place the countertop back on, and secure it to the sink. Install the faucet and spacer, connect the cold and hot water pipes, and then install the water supply device.

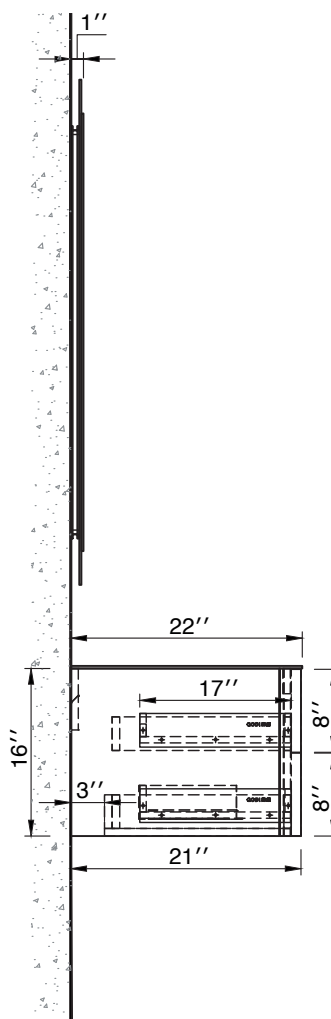
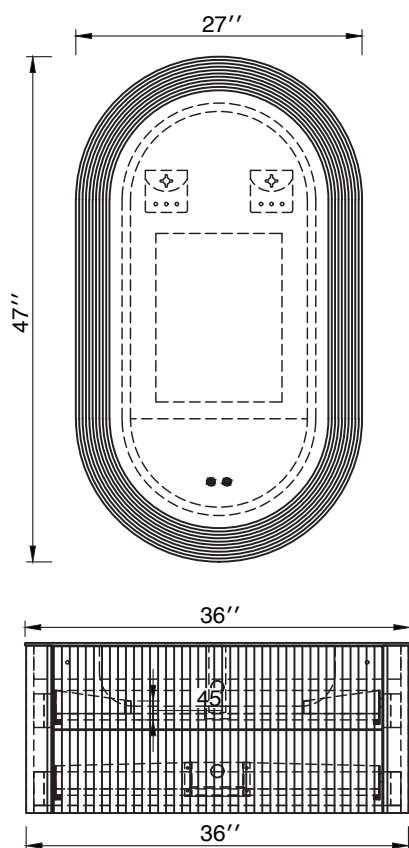
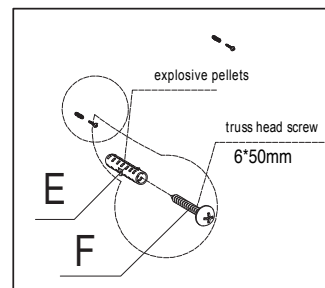
Mirror Installation

1. Check the wall for any water and electrical pipes.
2. Set the horizontal line for the mirror installation. Drill holes and insert plastic plugs and screws.
3. Hang the mirror in the predetermined position.
4. Install the mirror lights. The installation is complete.

Notes

Please read the installation instructions carefully before starting. You should have a basic understanding and grasp of the installation process and structure of this bathroom cabinet to avoid adverse outcomes. Be careful and meticulous during installation to prevent damage to the cabinet.

TG-53



Unpack the bathroom cabinet, countertop, bathtub, and bathroom mirror, check if all the components are complete and undamaged, then place them on a flat, clean, and soft mat to start the installation.

Bathroom Cabinet Installation

1. Determine the installation location for the product.
2. Place the stone countertop on the cabinet, adjusting the cabinet to ensure it is level and stable, aligning the sink and the countertop openings; then place the undermount sink underneath the countertop.
3. Remove the countertop to install the faucet, apply a bead of glass adhesive around the edge of the sink, place the countertop back on, and secure it to the sink. Install the faucet and spacer, connect the cold and hot water pipes, and then install the water supply device.

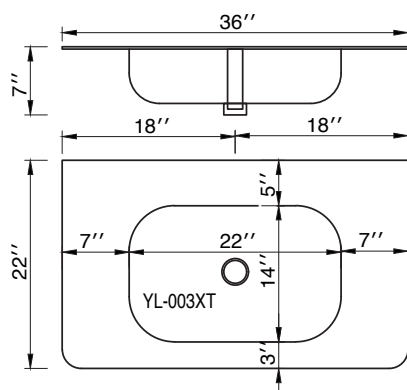
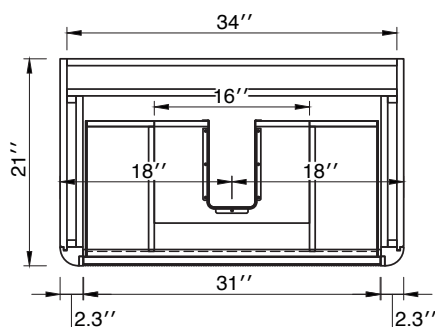
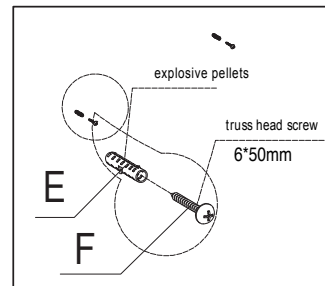
Mirror Installation

1. Check the wall for any water and electrical pipes.
2. Set the horizontal line for the mirror installation. Drill holes and insert plastic plugs and screws.
3. Hang the mirror in the predetermined position.
4. Install the mirror lights. The installation is complete.

Notes

Please read the installation instructions carefully before starting. You should have a basic understanding and grasp of the installation process and structure of this bathroom cabinet to avoid adverse outcomes. Be careful and meticulous during installation to prevent damage to the cabinet.

TG-53



Unpack the bathroom cabinet, countertop, bathtub, and bathroom mirror, check if all the components are complete and undamaged, then place them on a flat, clean, and soft mat to start the installation.

Bathroom Cabinet Installation

1. Determine the installation location for the product.
2. Place the stone countertop on the cabinet, adjusting the cabinet to ensure it is level and stable, aligning the sink and the countertop openings; then place the undermount sink underneath the countertop.
3. Remove the countertop to install the faucet, apply a bead of glass adhesive around the edge of the sink, place the countertop back on, and secure it to the sink. Install the faucet and spacer, connect the cold and hot water pipes, and then install the water supply device.

Mirror Installation

1. Check the wall for any water and electrical pipes.
2. Set the horizontal line for the mirror installation. Drill holes and insert plastic plugs and screws.
3. Hang the mirror in the predetermined position.
4. Install the mirror lights. The installation is complete.

Notes

Please read the installation instructions carefully before starting. You should have a basic understanding and grasp of the installation process and structure of this bathroom cabinet to avoid adverse outcomes. Be careful and meticulous during installation to prevent damage to the cabinet.